

EVOKE HOMES

by Vogue

HOUSE & LAND PACKAGE

\$776,340



Get your loan Pre Approval within 5 days*

Home Design:	EATON 17.5 Mark2	Facade:	Iris
Home Width:	7.80m	Estate:	Edmondson Park
Home Length:	13.03m	Suburb:	Edmondson Park
Home Size:	163.72m ²	Lot #:	103
# Bedrooms:	5	Frontage:	9m
# Bathrooms:	3	Size:	302.60m ²
# Garage:	1	Registration Date:	Registered

PACKAGE SPECIAL OFFERS

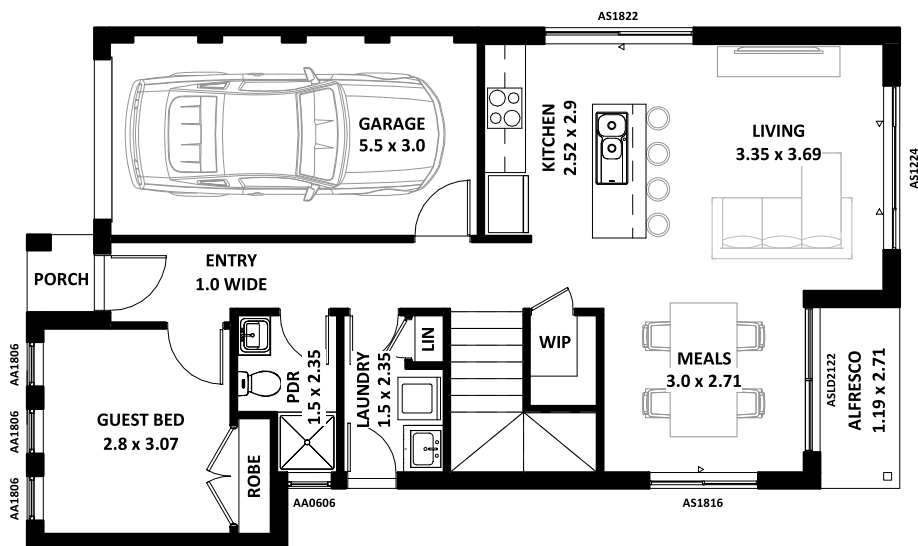
FIXED PRICING

FREE Solar System

**180 day maintenance
period for your home**

* Terms and Conditions Apply: We will pay your interest ONLY repayments from Slab stage to the date of obtaining Occupational Certificate*. These inclusions exclude duplexes, dual occupancy granny flats and custom designed homes. All offers in this document are not available with any other offer(s) unless specified. Where an item is required to be upgraded or substituted due to site specific requirements of an Authority, including but not limited to compliance with matters such as hydraulics, bushfire BAL rating, and/or acoustic requirements extra charges may apply. Images in Vogue Homes brochures may depict fixtures, finishes and features not supplied by Vogue Homes or included in the Price including but not limited to retaining walls, landscaping, driveways and pathways, pergola, barbeque, decorator items, feature wall, decorator screen and shelving, water features, fencing, swimming pools, decks, fixtures and letter boxes. All internal and external decor items are excluded. Photos are indicative only. Refer to specifications for full details. Vogue Homes reserves the right to change or remove any of the included items, specifications and suppliers at its discretion, without notice and without client's approval. The price includes only these items specifically included in this document (not depicted by the pictures). Ducted Air unit is suitable for the selected home. Solar System is 6.6KW system and installed by a 3rd party, Vogue Homes is not responsible for it's performance, expected results, warranties, etc... For more details, please refer to the supplier's website directly. Products shown are subject to home designs. Any item not listed above will incur additional cost. All products have individual warranties by the respective manufacturer/distributor. Vogue Homes is not responsible for these warranties. Ask your new home consultant for house specific inclusions.

- 2.6m high ceilings
- European Stainless Steel appliances
- 20mm Stone Benchtops in kitchen
- Ceramic tiling to porch and alfresco
- Ceramic tiling or Laminate floors to kitchen, living, hallway
- 900mm European appliances and dishwasher
- Ducted Air Conditioning
- Carpet to bedrooms
- Clothesline
- Letterbox
- Coloured Concrete Driveway
- Turf to Front & Back
- Panellift Garage Rollerdoor + 2 Remotes



www.vogue-homes.com.au
homeandland@vogue-homes.com.au

Capitol Constructions T/as Voque Homes ABN 89 064 786 885 Builders License Number 115618C.